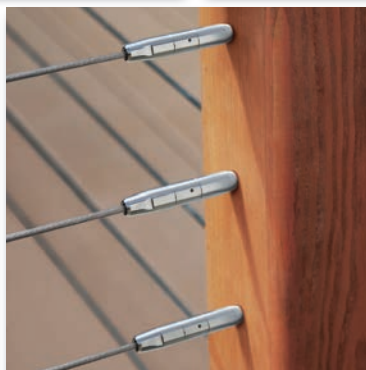


SINCE 1948

# feeney®

ARCHITECTURAL & GARDEN PRODUCTS



PRODUCT OVERVIEW 2014

feeney® *makes it easy*

LIGHTLINE • STA-LOK • TRELLIS COLLECTION • DESIGNRAIL • CABLERAIL

## Stainless Steel Cable Assemblies that Enhance Any Railing and Any View!

Slender **CableRail** cable assemblies are the perfect railing infill alternative to pickets and glass panels. They're made from beautiful yet weather-tough 316-grade stainless steel with an assortment of cable and attachment hardware options. The assemblies are strong, durable, easy to install, low maintenance, and virtually invisible.

### Standard Cable Assemblies

*Standard Assemblies Make Measuring, Ordering, and Installing a Breeze.*

**CableRail** Standard Assemblies are sold in a wide range of standardized pre-cut lengths for easy ordering. There's no wasted time taking precise railing measurements, just select assemblies that are longer than you need and trim any excess in the field. Each assembly includes special **Threaded Terminal** and automatic-locking **Quick-Connect®SS** attachment fittings that are sleek, simple to use, and easy to conceal.

- Easy to order with standardized, pre-fabricated assemblies
- Attractive and unobtrusive with slender cables and hidden fittings
- High-strength, low-maintenance, weather-tough 316-grade stainless steel
- Available in 1/8", 3/16", and 1/4" cable sizes to complement any railing design
- Wide range of standard lengths (5' to 70' in 5' increments) that can be field trimmed
- Automatic-locking **Quick-Connect®SS** fittings make installation fast and easy
- For wood or metal railing frames in exterior, interior, residential or commercial settings
- Design and technical support line, 1-800-888-2418
- Contains recycled materials



Finish with decorative **End Caps**. Available in 9 color options and 3 stainless steel designs.



#### NEW!

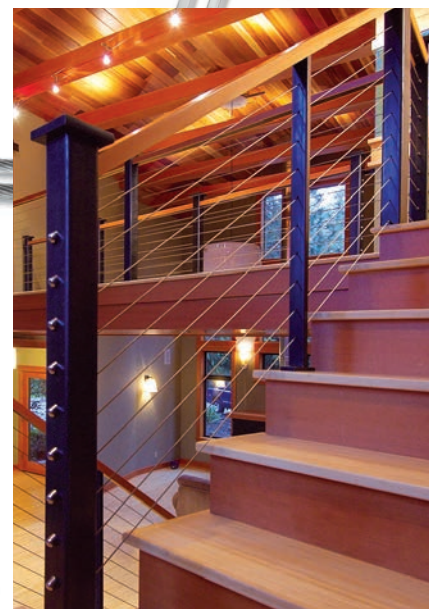
Pre-drilled, powder-coated aluminum intermediate pickets are a low maintenance and time saving mid-span support option for wood railing frames.



The **Threaded Terminal** comes pre-attached to one end of the cable and securely fastens to an end post using a **Snug-Grip® Washer Nut**.

The **Quick-Connect®SS** fitting has patented one-way jaws that lock automatically. Just slide it on, pull the cable tight, and trim the excess.

Durable, low-maintenance stainless steel cable available in 1/8", 3/16", and 1/4" diameters.





Easy on both the eyes and the view, they're an ideal complement to any railing design, indoors or out, and with a recycled material content over 70%, they're easy on the environment as well. **CableRail** products are divided into two categories: **Standard** and **Custom**.

## Custom Cable Assemblies

### Architectural Hardware That Anticipates Any Cable Design.

Projects with special installation conditions or design considerations may require certain styles of cable and fittings not addressed by our **CableRail** Standard Assemblies. To fulfill those specific design and function needs, we offer a wide assortment of cable and hardware options for fabricating custom assemblies. You can either order individual components and build your own assemblies, or let us fabricate them for you, complete and ready to install.

**1 x 19** cables have 19 individual wires twisted into a semi-flexible strand.



**7 x 7** cables have 49 individual wires woven into a flexible strand.



The common choices for architectural applications are uncoated 1/8", 3/16", and 1/4" diameter 1x19 and 7x7 cables of 316-grade stainless steel.

They offer versatility, aesthetics, low maintenance, durability, and high abrasion resistance.



- Attractive, durable and low maintenance
- High-strength 316-grade stainless steel with a tumbled satin finish
- Wide variety of cables and fittings to meet any design and installation condition
- Sold as complete assemblies, ready to install, or as individual components to fabricate on site
- For wood or metal railing frames in exterior, interior, residential or commercial settings
- Materials in stock and ready for fast UPS delivery
- Design and technical support line, 1-800-888-2418
- Contains recycled materials

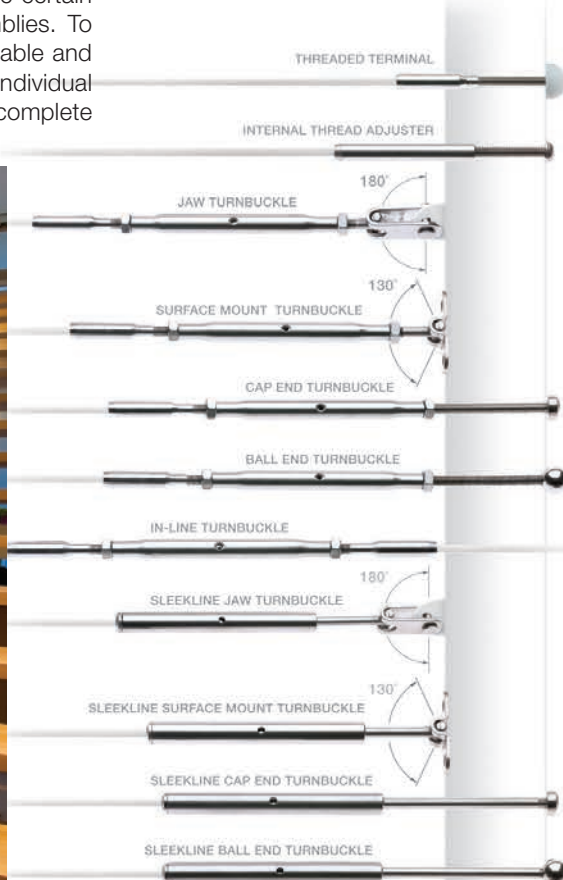


Easier

Our expanded **Quick-Connect**® line includes a versatile selection of swageless cable fittings that offer the flexibility and economy of assembling cables in the field and the speed and gripping power of **Quick-Connect**® jaws. Just insert the cable, and the spring-loaded jaws lock-on automatically; they make installations easier!

### Tension Adjustment Fittings

Threaded Terminals, Turnbuckles, and Adjusters control cable tension. Every cable assembly must include at least one of these fittings.



### Fixed Ends

Non-adjustable fittings with no tensioning capability. Must be paired with at least one Tension Adjustment Fitting.

# DESIGN·RAIL<sup>®</sup>

by feeney<sup>®</sup>

*If searching for a complete railing system, look no further.*

**DesignRail<sup>®</sup>** aluminum railing frame systems deliver the durability of aluminum in carefully engineered designs that ensure lasting beauty, structural integrity, easy installation, affordability, and reduced long term maintenance expense. All of the rail and stanchion extrusions are made from high-strength 6000-series aluminum with over 70% recycled content, and they can be quickly cut and assembled on-site using components that snap and screw together. Tough powder-coated finishes meet rigorous AAMA 2604 specifications and are available in a wide variety of colors, offering superior color retention, impact resistance, and weather durability. Frames can even be fitted with recessed, high-intensity LED lights for dramatic nighttime effects.

**DesignRail<sup>®</sup>** aluminum railing systems are easily adaptable to any project: interior or exterior, commercial or residential. Simply choose the style options to custom design your railing. Plus our technical sales staff will be glad to help from start to finish.

Contains recycled materials



Photo: John Swain



**NEW!**

Pre-packaged **DesignRail<sup>®</sup>** Rail Kits that can be mounted between wood posts and include a pre-drilled intermediate picket to support *CableRail* cables.

## 5 Cap Rail Options:

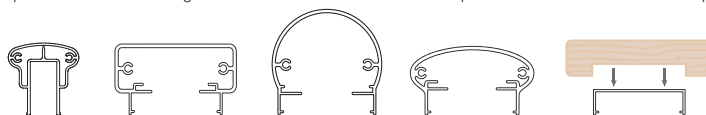
Series 150  
Graspable - Stairs

Series 200  
Rectangular

Series 300  
Rounded

Series 350  
Elliptical

Series 400  
Use With Wood Cap



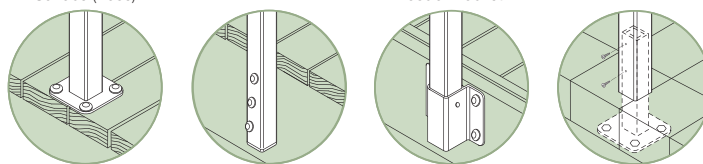
## 4 Post Mounting Options:

Surface (Base)

Fascia

Fascia Bracket

Stanchion Sleeve



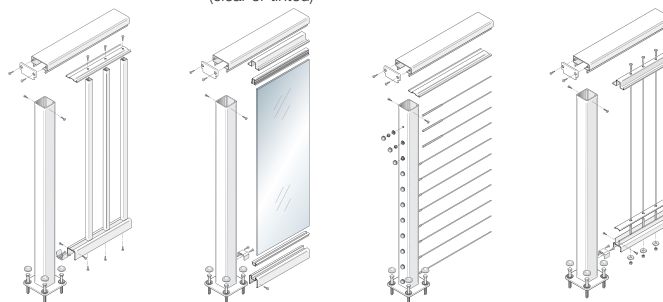
## 4 Standard Infill Options:

Aluminum Picket

Tempered Glass  
(clear or tinted)

Horizontal Cables

Vertical Cables



## 8 Standard Colors: (plus over 200 custom powder coated colors)



1-888-260-7444

| [www.usriggingdepot.com](http://www.usriggingdepot.com)



# STA-LOK®

## *Stainless Steel Rods Offer Strength, Versatility, and Beauty.*

Feeney has partnered with **Sta-Lok®**, one of the world's leading manufacturers of high quality rigging products since 1973, to offer a comprehensive range of stainless rods and fittings manufactured from the highest specification materials. **Sta-Lok®** rod assemblies are an attractive, high-strength, low-maintenance alternative to traditional steel rod assemblies and wire rope rigging systems, and they have the added benefit of being able to support loads in both tension and compression conditions. All assemblies are made to order, ready to install and can be used in a variety of structural and decorative applications from glass curtain wall and door canopy supports, to guardrail balusters and trellis infill grids.



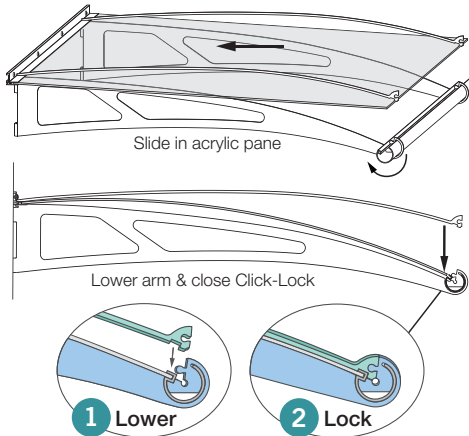
- Available in 5/16" to 1" diameter sizes
- Low-maintenance, weather-tough, 316-grade stainless steel with satin finish
- Supports loads in both tension and compression conditions
- Tension Fork fittings offer easy adjustment without bulky turnbuckles
- Special Rod Connectors available for assemblies longer than 12-feet
- Materials in stock and ready for fast order turn-around and delivery
- Variety of decorative and structural applications
- Cold heading and other specialty rods and components are available as special order
- Design detail and product selection assistance, 1-800-888-2418
- Contains recycled materials



# LIGHTLINE®


*Add Flair and Functionality to Doorways, Walkways, and Façades.*

Feeney is the exclusive U.S. distributor for **Lightline®** canopy products manufactured by Polymer Kunststoffe GmbH of Germany. **Lightline®** canopies combine stainless steel, aluminum, and acrylic components into modern, eye-catching designs that are both visually and functionally attractive. The canopies are sold in easy-to-order, fast-to-assemble kits with durable, weather-tough stainless steel support arms, UV resistant acrylic visor panes, integrated aluminum rain gutters, and all of the necessary attachment hardware. Kits come in a variety of sizes with clear, frosted, and tinted pane finish options, and the special patented **Click-Lock** pane attachment feature makes installations a breeze.



The patented **Click-Lock** feature allows fast, easy installations without drilling holes through the acrylic pane. Simply insert the acrylic pane into the frame, lower the support arms and snap the Click-Lock ends together.



- For doorways, entrance areas, windows, and walkways
- Complete, easy-to-order, easy-to-install kits
- Attractive, eye-catching designs available in a variety of sizes
- Strong, durable stainless steel support arms with a fine-grain satin finish
- Arms available in standard and heavy duty thicknesses
- UV resistant acrylic visor panes with clear, frosted, and tinted finishes
- Integrated clear-anodized aluminum rain gutters
- Clear-anodized wall connection with hidden rubber seal
- Patented **Click-Lock** pane attachment feature for easy installation
- German engineering and quality
- Toll-free assistance line, 1-800-888-2418
- Contains recycled materials 



# TRELLIS Collection

*Stylish, Easy-to-Install Trellises for Residential and Commercial Settings.*

Drawing from our vast experience with aluminum frames and stainless steel cables, rods, and fittings, we have developed a collection of attractive vertical trellises for residential and commercial settings. The trellises are sold in complete, easy-to-use kits with powder-coated aluminum support frames and sleek stainless steel cable and rod vine grids. Utilitarian, decorative, and artistic, these trellises are perfect for displaying light- to medium-weight foliage and offer simple, elegant design details with exceptional versatility and easy installation. Use them to minimize UV exposure on walls, control ambient heat gain, frame a lovely view, direct foot traffic, or create a cool, relaxing retreat or entertaining area.



## 3-in-1 Trellis

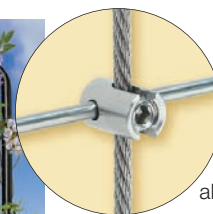
The 3-in-1 rod trellis is a complete, easy-to-assemble, all stainless steel wall mount trellis kit with 1/8" diameter rods and special mounting components that can be configured into any one of 3 trellis design layouts: Fan (shown), Diamond, Grid. The standard layouts range from 54"w x 62"h to 35"w x 69"h depending on the designs.



## Somerset®II Trellis

The wall mounted Somerset®II trellis consists of two 40" long brackets, top and bottom, that screw to the wall face and support a lattice of 1/8" diameter cables and rods. The brackets can be spaced from 2 to 6 feet apart to fit a variety of wall heights, and multiple kits can be mounted adjacent to one another to make wider trellises. Also available in an Arch Top style.

- Complete, easy-to-install kits
- Aluminum support frames and brackets with durable, powder-coated finishes
- 316-grade stainless steel cables and rods for lasting beauty and weather-tough strength
- Special **Micro Cross-Clamps** allow for easy attachment and positioning of rods
- For extending gardens vertically, vegetable supports, privacy panels, space dividers, sun shades, decorative backdrops
- Combine multiple kits to create the landscape design you desire
- Contains recycled materials



Special stainless steel **Micro Cross-Clamps** securely hold the horizontal rods in position, and the locking setscrew allows easy adjustability.

## Greenway Trellis

The freestanding Greenway trellis is a single size, tubular frame (43"w x 72"h) that is quickly assembled with splice sleeves and screws. The legs can be set in compacted gravel or concrete footings or surface mounted using optional base plates.



Since 1948, Feeney has pioneered industry-leading cable rail systems and other architectural and rigging products. We are known for our very high quality, and we constantly strive to simplify the way our customers work with us and our products. We think you will find our *CableRail*, *DesignRail*®, and *Quick-Connect*® products easy to use, with features and benefits that are innovative and compelling. So, if you want the highest quality architectural solutions supported by a friendly and easy process, you've come to the right place. Feeney makes it easy!



Many of our products are available for purchase through a network of authorized dealers. Be sure to look for the official Authorized Feeney Dealer logo on the dealer website or in-store display to ensure that you are buying authentic Feeney products.

For a free catalog, help with questions, or assistance locating dealers, please give us a call 1-800-888-2418. And be sure to visit our website [www.feeneyinc.com](http://www.feeneyinc.com) for complete product information.



## FEENEY, INC. Sales Locations

---

U.S. Rigging Supply  
1600 E. McFadden  
Santa Ana, CA 92705  
1-888-260-7444  
[websales@usrigging.com](mailto:websales@usrigging.com)

## MEMBER OF

